

UPDATE - NUMBER 1 to the
HANDBOOK OF 'FELTS' & 'LEATHERS'
ISSUED BY TOBACCO AND TRADING COMPANIES

FELTS - PART I - TOBACCO & TRADING COMPANY ISSUES -
NEW ENTRIES to be added

New entry:												
B38-1 CONVENTIONAL RUG DESIGNS (Large) (Illustration No 031A)				138 x 194 mm (138 x 242 with fringe)				Rubber-stamped on back 'Luxury Cigarettes' 'Factory No.7 3 rd District, New York'. Fringed ends. ? A.T.C. issue.				
1.	2.	3.	4.									
031A - 01*			031A - 02*			031A - 03*			031A - 04*			

New entry under 'Other than American Tobacco Co. Felt Issues' add at page 24

BF ? (Update) PRETTY GIRL PORTRAITS (Illustration No 053)	145 x 73 mm	White line drawings. Head and neck portraits of a girl on pennant shaped coloured felts with name captioned below and numbered at top. Vertical format with wide end at top of portrait. Unrecorded Issue. ? Bread Company Issue.	P 6 seen
---	----------------	---	----------

305. Maud (Maroon)	352. Helen (Brown)	365. Maud (Lt. red)	411. Clara (Purple)	459. Sarah (Red)
500. Ethel (Dk. blue)				

FELTS - PART II - UPDATED ENTRIES

<u>Page No 7 (Update) B1 - B5 NATIONAL FLAGS (Very Large)</u>	
<u>Series B3 – B</u>	In the second box against B3-B, after wording 'Each with four colours of background' add '(Dk blue, Dk Brown, Green and Purple. (Brown seen in multiple shades))'.
<u>Series B3 – D</u>	In the first box add a new entry 'B3 – D 206 x 305 mm E 2'. In the second box enter 'Square corners with small shield. No's '1' and '3' with 4 & 2 plain b'g'rd colours respectively. Premium Issue.' In the third box add a column 'B3 – D', against No '1. U.S.A (No caption)' and 'No 3 Confederate States' enter 'B3 – D'. against 'Total' at base of this column enter '2')
<u>Series B4 - A(a)</u>	In the first box against entry 'B4 – A(a)' amend '10' to read '8' In the second box delete wording 'No 1 found with 4 background col'rs.' In the third box, in column 'B4 -A(a)' delete entry 'B4 -A(a)' against No '1. U.S.A (No caption)' & 'No 3 Confederate States'. amend 'Total' at base of this column to read '8'.

FELTS - PART II - UPDATED ENTRIES

Continued

Page No 8 (Update) B6 NATIONAL FLAGS (Medium / Large)

National Flags in the B6 Series, listed on recently found Coupons issued by the ATC (Successor) Company, have now been incorporated in the revised listings below. In exchange for 25 of these 'Special Flag Blanket' or 'Sovereign' Coupons, the Company offered 12 of these flags.

The A.T.C. Company appears to have issued six sets of 12 flags and one 'spare' set of 6 flags in the B6 Series. To facilitate identification, the original listings of two 'Plain corner' groups, '1b' and '2a', have been combined and listed under the column titled '1b' (Plain corners) where the contents of each of the five individual 'plain corner' sub-sets can be found.

The contents of each of two sub-sets can also be found under the column titled '1a' (Hooked rope around mast). The contents of the second box below provides additional data to also assist with set identification..

B6 NATIONAL FLAGS (Medium / Large)	(Illustration No 002)	135-145 x 207-215 mm
Replace the existing entry with the following boxes.		

Series / (Issuer)	Corners / Flag pole	Flagpole top	Identification	Background Colours	No seen
B6 1a - 1 (ATC Successor)	Plain corner except Russia & Norway indented	Ball & rectangle	Plain background. 'Hooked Rope' around Mast. Flagpole ends just above bottom border.	Blue - Green.	G 12
B6 1a - 2 (ATC)	Indented squares at corners	Ball & rectangle.	Plain background. 'Hooked Rope' around Mast. Flagpole ends just above bottom border.	Deep blue or yellow	G 12
B6 1b - 1(i) (ATC)	Plain corner	2 x Ball & disk. 4 x Ball & two disks.	4x Plain background. 2x Floral background. (Bulgaria & Ireland)	Yellow	G 6
B6 1b - 1(ii) (ATC)	Plain corner	Ball & two disks	Plain background.	Pinkish red, or Brown. U.S.A. (No cap'n)-yellow)	G 6
B6 1b - 2 (ATC)	Plain corner	6xBall& disk 6 x Ball & two disks.	12 x Floral background. Pole ends just before border.	Brown, Green, Grey or Purple	G 12
B6 1b - 3 (ATC)	Plain corner	Ball & two disks.	Plain, also seen with floral b'g'd. Titles in white letters.	Deep blue. Green & Brown).	G 12
B6 1b - 4 (ATC)	Plain corner	4 x Ball & one disk. 2 x Ball & two disk. (Columbia & Venezuela)	Plain background.	Dk. brown, Green, Grey, Tan & Purple.	G6 + 1(v) (Columbia-4 x b'g'd col'rs). (Colombia- 2 x b'g'd col's).
B6 1c (P Lorrillard)	Large angles	Rounded point & disk	Plain background. Poles end just before lower border. Title below flag.	Brown. Green. Purple. Yellow / Tan.	G 9
B6 1d (P Lorrillard)	Large shields	Rounded point & disk	Plain background. Poles end just before lower border. Title below flag.	Dk. brown. Lt. brown. Green. Purple. Yellow	G 10
B6 1e (P Lorrillard)	Large checks / arrows	Rounded point & disk	Plain background. Poles end just before lower border. Title below flag.	Yellow.	G 9
B6 1f (ATC)	Square indents at corners	Ball & two disks	Plain background.	Yellow.	G 12
B6 2b (Liggett & Myers)	Plain corner	Ball & rectangle (Greece, also Onion flag-top variation)	Floral pattern background except 'United States' with. Caption & plain background. Bottom of poles to lower border. Border variat'ns seen.	Green. Purple. Yellow & Tan, including 'United States'.	G 36+ 3V seen (No's 5, 30, & 36)
B6 3a (P Lorrillard)	Various	Various	Country title in crown. Patterned background. Bottom of pole to lower border. (Variations to some 'crowns' seen).	Dk blue. Maroon. Yellow, Green. White. (14 in one colour only). 5 slightly smaller 137-146 x 213 mm. (Belgium, Germany, Italy Japan & Poland).	G 19 + 1 V seen (No6)

FELTS - PART II - UPDATED ENTRIES







Continued

B6 NATIONAL FLAGS (Medium / Large)

(Second box continued)

B6 3b (P Lorrillard)	Various	Various	Country title in shield. Many shield variations. Patterned background. Bottom of pole to lower border.	Dk. blue. Maroon. White. Green. Orange. Yellow. Olive-green. (One backgr'd colour for each, except Mexico with blue & yellow background.	G 60 + 13 Variations seen. (No's 2,5,12,13, 14,21,27, 35,39,49,52 58 & 65.)
--------------------------------	---------	---------	---	---	--

(Third box)

	B6- 1 Narrow Frame. Plain & Mixed (Plain / flowered) background.						B6-2 Narrow Frame. Flowered background		B6-3 Wide Frame Pattern on backgr'nd	
	Hook'd Rope around mast	Plain corners	Angle corners	Shield corners	Corner Check	Square corners	Narrow margin see B6-1b	Wider margin & softer Mater'l	Capt'n on Crown	Capt'n on Shield
Number in brackets below denotes different frame and/or design.										
Country \ Series	1a	1b	1c	1d	1e	1f		2b	3a	3b
1. (U.S.A.) No caption		1b-1(ii)		1d						
2. Argentine Rep. Argentina Argentine Republic		1b-1(ii)						2b		3b+V
3. Australia						1f				3b
4. Austria		1b-1(i)								
5. Austria-Hungary Austro - Hungary					1e			2b+ V		3b+V
6. Belgium	1a-2	1b-3			1e			2b	3a+V	3b
7. Bohemia								2b		3b
8. Bolivia										3b
9. Brazil								2b		3b
10. Bulgaria		1b-1(i)			1e			2b	3a	3b
11. Burmah	1a-2	1b-3								3b
12. Canada										3b+V
13. Chili	1a-2	1b-2	1c					2b		3b+V
14. China Republic (Bars) China (Lion) China (Sun in corner) China (Empire)	1a-1	1b-3	1c			1f		2b		3b+V
15. Colombia / Columbia U.S. of Columbia		1b-4+V								3b
16. Confederate States				1d						
17. Congo										3b
18. Corea	1a-2					1f				
19. Costa-Rica Costa Rica	1a-2	1b-2								3b
20. Crete										3b
21. Cuba	1a-2	1b-2	1c					2b		3b+V
22. Denmark	1a-1	1b-3	1c					2b	3a	3b
23. Dominican Republic						1f				
24. Ecuador		1b-2								3b
25. Egypt	1a-1	1b-3								
26. England		1b-4								3b
27. France	1a-1	1b-2	1c					2b		3b+V
28. Germany	1a-1	1b-3	1c			1f		2b	3a	3b
29. Great Britain	1a-1		1c			1f		2b	3a	
30. Greece Greece (Onion top)	1a-1	1b-1(ii)	1c					2b 2b(V)	3a	3b
31. Guatemala						1f				3b

FELTS - PART II - UPDATED ENTRIES

Continued

B6 NATIONAL FLAGS (Medium / Large)							Continued			
Number in brackets below denotes different frame and/or design.	Hook'd Rope around mast	Plain corners	Angle corners	Shield corners	Check corners	Square corners	Narrow margin See 1b	Wider margin & softer mater'l	Capt'n on Crown	Capt'n on Shield
Country \ Series	1a	1b	1c	1d	1e	1f		2b	3a	3b
32. Hayti		1b-2		1d						
33. Holland								2b	3a	3b
34. Honduras		1b-1(ii)								3b
35. Ireland		1b-1(i)			1e			2b		3b+V
36. Italy		1b-1(i)			1e			2b+ V	3a	3b
37. Japan	1a-1	1b-3		1d		1f		2b	3a	3b
38. Liberia		1b-4						2b		3b
39. Mexico		1b-1(i)			1e					3b+V
40. Morocco								2b		3b
41. Netherland Netherlands	1a-1	1b-2		1d						
42. New Zealand New - Zealand		1b-4		1d				2b		3b
43. Nicaragua		1b-1(ii)								3b
44. Norway	1a-1	1b-4		1d					3a	3b
45. Orange Free State										3b
46. Panama	1a-2			1d		1f		2b		3b
47. Paraguay						1f				3b
48. Persia		1b-1(i)			1e			2b	3a	3b
49. Peru		1b-3						2b		3b+V
50. Philippines								2b		3b
51. Poland			1c					2b	3a	3b
52. Portugal					1e			2b		3b+V
53. Roumania		1b-2							3a	3b
54. Russia	1a-1	1b-2		1d				2b	3a	3b
55. Salvador				1d		1f				3b
56. Samoa										3b
57. San Domingo	1a-2									3b
58. Scotland	1a-2	1b-3								3b+V
59. Servia		1b-2						2b	3a	3b
60. Siam	1a-2	1b-3						2b		3b
61. So. African Rep.								2b		3b
62. South Australia		1b-2								
63. Spain	1a-2	1b-2						2b	3a	3b
64. Sweden		1b-1(ii)						2b	3a	3b
65. Switzerland	1a-1	1b-3			1e					3b+V
66. Tunis										3b
67. Turkey		1b-3						2b	3a	3b
68. Turkey - Egypt	1a-2									
69. Uruguay						1f				3b
70. Venezuela		1b-4								3b
71. Zion								2b	3a	3b
72. United States (Caption)								2b		
Totals	1a1-12 1a2-12 24	1b-1(i)-6 1b-1(ii)-6 1b-2 12 1b-3 12 1b-4 6 42	1c - 9	1d-10	1e - 9	1f-12	--	2b-36 + 3V	3a-19 + 1V	3b-60 + 13V

B6 NATIONAL FLAGS (Medium / large) (Individual United States Flags) Continued

Series / Issuer	Corners	Flagpole top	Identification	Background Colours	No seen
B6 1g (ATC)	Rounded corners with star.	Ball & disk.	Plain background Narrow frame. Two tassels. 133 x 216mm	Blue. Blue-grey, Dk. Brown. Green. Olive green. Purple. Tan & Yellow.	G 1
B6 1h (ATC)	Square from 'Z' bend frame.	Ball & disk.	Plain background Narrow frame. Two tassels. 133 x 216mm	Blue. Blue-grey, Dk. Brown. Green. Olive green. Purple. Tan & Yellow.	G 1
B6 1j (ATC)	Ribbon corners (3 bows, 2 tails).	Ball & disk.	Plain background Narrow frame. Two tassels. 133 x 216mm	Blue. Blue-grey, Dk. Brown. Green. Olive green. Purple. Tan/Pink & Yellow.	G 1
B6 3c	Shield inverted to form square.	Arrow & disk.	Plain background Wide frame & margin. No tassels. Pole to bottom frame, 140 x 210mm	Background and edge colour combinations- Yellow-brown, Yellow-purple. Green-green. Green-brown. Green-black. Green-purple & Purple-purple.	G 1

		B6- 1 Narrow Frame – Plain background			B6-3 Wide frame margin. Plain b'grd
		Rounded corners containing star	Square 'z' bend Frame corners	Ribbon corners	Inverted shield corners
Country	Series	1g	1h	1j	3c
1. (U.S.A.) (No caption)		1g	1h	1j	3c

Page No 10 (Correction) B7 NATIONAL FLAGS (Smaller sizes)

In the second box against No 2. Amend entry as follows:

- 'Austro Hungary (*No hyphen*) (2 Crests)' '(A)' (*Not issued in 'B' series*)
- 'Austro-Hungary (*Hyphenated*) (2 Crests)' '(B)'
- 'Austro-Hungary (*Hyphenated*) (1 Crest)' '(B) (Variation)'.

Page 12 (Update & Correction) B12(b) MINIATURE INDIAN BLANKETS (Medium)

Illustrations for B12(b)-5 (Page 31)

Delete the illustration at '011 (5iii) - 48' - (Unconfirmed & unidentified) and replace with the new illustration below above the same number '**011(5iii) - 48'.



**011(5iii) - 48

Page No 14 (Correction) B20 CONVENTIONAL RUG DESIGNS

In the first box after 'G 12 Kn'n 'add 'G 9 seen':

PAGE 17 (Correction & Update) B 38 CONVENTIONAL RUG DESIGNS (Medium).

Text (Page 17)

In the first box amend to read after ‘No 649’ ‘or Egyptienne Straights No 2153 with ‘Factory’ wording.’
amend ‘X 52 kn’n’ to read ‘53 kn’n’.

In the second box add No ‘53.’

Illustrations. (Page 37)

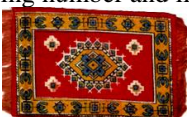
Replace illustration at number ‘031 - 15’ (Duplicate of No ‘031 - 09’.) with illustration No ‘031 - 15’ below.

Replace illustration at number ‘031 - 52’ (Duplicate of No ‘031 - 26’.) with illustration No ‘031 - 52’ below.

Add the following number and illustration ‘031 - 53’.



031 - 15



031 - 52



031 - 53

PAGE No 18 (Update) B55 CONVENTIONAL RUG DESIGNS

Illustrations Page 39



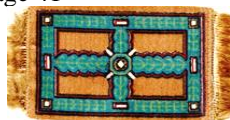
Add Illustration

‘036 - 15’

PAGE No 18 (Update) B56 CONVENTIONAL RUG DESIGNS

In the first box after ‘B (e) The Original Rug Zubelda Cigarettes ‘add ‘B (f) Factory No 649’

Illustrations Page 41



add Illustrations

‘037 - 103’



037 - 104’

PAGE 18 (Update) B70 INDIAN RUG DESIGNS

Illustrations Page 42.



add Illustration

038 - 21

Page 19 (Update) BF 1 - 2 ALLIED HEROES

In the first box ‘E 42 K’wn’ to read ‘E 43 K’wn’.

In the second box add the following entry ‘43 Gen. Currie Canada’..

Page 22 (Update) BF 3 COLLEGE PENNANTS ON FELT

In the first box amend P108 to read P 121

Replace the second box with the following entries:

1. Akron	2. Alabama	3. Alaska	4. Amherst	5. Army
6. Baylor	7. Belon	8. Boston College	9. Bradley	10. Brown
11. Bucknell	12. Butler	13. California	14. Campion	15. Carleton
16. Carnegie Tech.	17. C.C.N.Y.	18. Chicago	19. Clemson	20. Colgate
21. Colorado	22. Columbia	23. Cornell	24. Creighton	25. Dartmouth
26. Delaware	27. Denison	28. DePauw	29. Drake	30. Duke

BF 3 COLLEGE PENNANTS ON FELT	Continued
--------------------------------------	-----------

31. Florida	32. Fordham	33. Georgia	34. Georgia Tech.	35. Geo. Washington
36. Hampton	37. Harvard	38. Holy Cross	39. Idaho	40. Illinois
41. Illinois U.	42. Indiana	43. Iowa	44. Iowa State	45. Hopkins
46. Kansas	47. Kent State	48. L A. State	49. Loyola	50. L.S.U.
51. Maine	52. Manhattan	53. Marquette	54. Maryland	55. Mass. State
56. Miami	57. Michigan	58. Mich. State	59. Middlebury	60. Minnesota
61. Missouri	62. Miss. State	63. Montana	64. Navy	65. Nebraska
66. Nevada	67. New Mexico	68. No Carolina	69. No. Dakota	70. Northwestern
71. Notre Dame	72. N.Y.U.	73. Occidental	74. Ohio State	75. Oklahoma
76. Oregon	77. Oregon State	78. Pacific	79. Penn.	80. Penn. State
81. Pitts	82. Pratt	83. Princeton	84. Purdue	85. Redlands
86. Rice	87. Ripon	88. Rutgers	89. San, Francisco	90. Santa Clara
91. Sewanee	92. S.M.U.	93. So. California	94.. So. Carolina	95. So. Methodist
96. Stanford	97. St. John	98. St. Louis	99. St. Mary's	100. St. Olaf
101. T.C.U.	102. Temple	103. Tennessee	104. Texas	105. Texas and M
106. Toledo	107. Tulane	108. U.C.L.A	109. Utah	110. Vanderbilt
111. Vassar	112. Vermont	113. Villanova	114. Washington	115. Wash. State
116. Wayne	117. W. Virginia	118. Western Reserve	119. Wisconsin	120 Wyoming
121. Yale				

Page 25 (Update) NATIONAL FLAGS, SHIELDS & MEDALS (Canadian Issue)

SERIES (C) NATIONAL FLAGS

In the first box against Series (C) amend 'P 4?' to read 'P 7'

In the fourth box '(C)' add the following entries '5. Japan', '6 Switzerland' & '7 Scotland'.



55(C) - 05



55(C) - 06



55(C) - 07

LEATHERS - PART II - TOBACCO & TRADING COMPANY ISSUES.

Page 5 (Update) L8 ACTORS. Illustrations - Page 5

Add the following Illustration. (Example of a Leather in Set L 8.)



L8 - 237

PAGE 20(Update) L27 GIRLS (Bust length figures)

In the first box amend '9 known' to read '10 known'

In the third box add the following to the description against number '1' 'Frisled lace dress.'

add the following entry '10. Profile to R. Coiled plaited hair. 'Wrap-round low-cut dress.'



L27-1 No 10

PAGE 27 (Update) L55 COLLEGE FRATERNITY SEALS

In the first box amend to read '24 known.'

Replace the third box as follows:

1. Alpha Chi Omega	2. Alpha Delta Phi	3. Alpha Omicron Pi	4. Alpha Phi
5. Alpha Tau Omega	6. Chi Omega	7. Delta Chi	8. Delta Tau Delta
9. Delta Upsilon	10. Gamma Phi Beta	11. Kappa Kappa Gamma	12. Kappa Psi
13. Phi Gamma Delta	14. Phi Kappa Sigma	15. Pi Kappa Phi	16. PSI Upsilon
17. Skull and Keys	18. Theta Delta Chi	19. Zeta Psi	20 Kappa Alpha Theta
21 Phi Delta Theta	22 Sigma Alpha Epsilon	23 Sigma Nu	24 Delta Gamma

PAGE 27 (Update) L56 MOVIE FILM PERSONALITIES

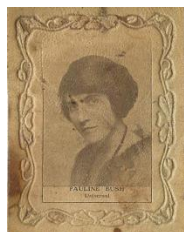
In the first box after 'PERSONALITIES' delete '(Pennant shape)'
amend '72 known to read '76 known'

In the third box add the following entries: 73. Harry Benham

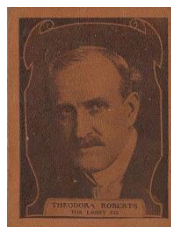
74. Anna Little

75. Pauline Bush - Universal

76 Theodora Roberts - The Lasky Co.



L56 - 75



L56 - 76

Alan S. 11 - 09 - 2021.